

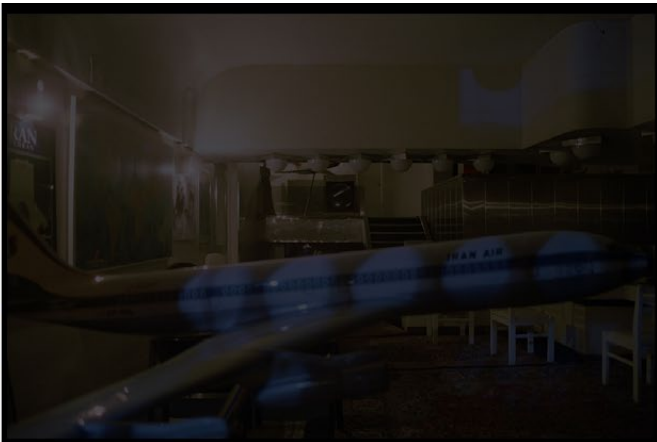
STUDIO
DARMANGAH

Mohammad Ghazali
Night Is..., 2003-2014

For Mohammad Ghazali darkness, night, blindness and randomly selected visions are, paradoxically, metaphors of clarity and insight. The blind and cold eyes of the monumental sculptures in *Where the Heads of the Renowned Rest*, the blind and randomly taken images of *Bad and Worse*, the partially erased photographs of *Tehran A Little to the Right* and the dying light of *Night Is...*, throw the illuminating light by which all that is hidden and concealed comes forth. In the series *Night Is...*, the light emanating from within the box, turns in time, like a living organism, dark and blind. The fulcrum of the light box is the metaphor of the artist's creative vision, the incandescent moment of inspiration, the inner light of creativity, and the substantive energy that is evanescent and perishes. The images that remain accessible are the ones lit from without – the archeological record of the inner inspiration or the proof of a once fiery inner vision that has in time turned distant and inaccessible to all, including to the artist himself. The dark box is now to be reinvented and restructured from the outside, relative to its transparent model, by readers. This darkness engenders a diegetic process of interpretation and disparate ontological readings. The images of *Night Is...*, lit from within and without, measure the distance between the artist and the world, they measure the relation between the known and the unknown, between the world of the artist's vision and innumerable enduring epiphanies. Each and every one of these photographs acknowledges that there are multiple universes abutting each other and that Ghazali is the galactic traveler.¹

Dr. Abbas Daneshvari

¹ Excerpts from the article, "The Aleatory Nature of Being: The Art of Mohammad Ghazali."



Travel Agency from the "Night Is..." Series

2003 - 2014

Edition of 3

Diptych, Image dimensions: 6 x 9 cm

Each panel: 50x50x5 cm

Overall dimension: 50x100x5 cm

Analog photography

Inkjet print on Hahnemühle Photo Rag Ultra Smooth

Lambda Print On Kodak Professional Backlit Transparency Film



Carpet Tableaux Gallery from the "Night Is..." Series
2003 - 2014
Edition of 3
Diptych, Image dimensions: 6 x 9 cm
Each panel: 50x50x5 cm
Overall dimension: 50x100x5 cm
Analog photography
Inkjet print on Hahnemühle Photo Rag Ultra Smooth
Lambda Print On Kodak Professional Backlit Transparency Film



Furniture Store #1 from the "Night Is..." Series
2003 - 2014
Edition of 3
Diptych, Image dimensions: 6 x 9 cm
Each panel: 50x50x5 cm
Overall dimension: 50x100x5 cm
Analog photography
Inkjet print on Hahnemühle Photo Rag Ultra Smooth
Lambda Print On Kodak Professional Backlit Transparency Film



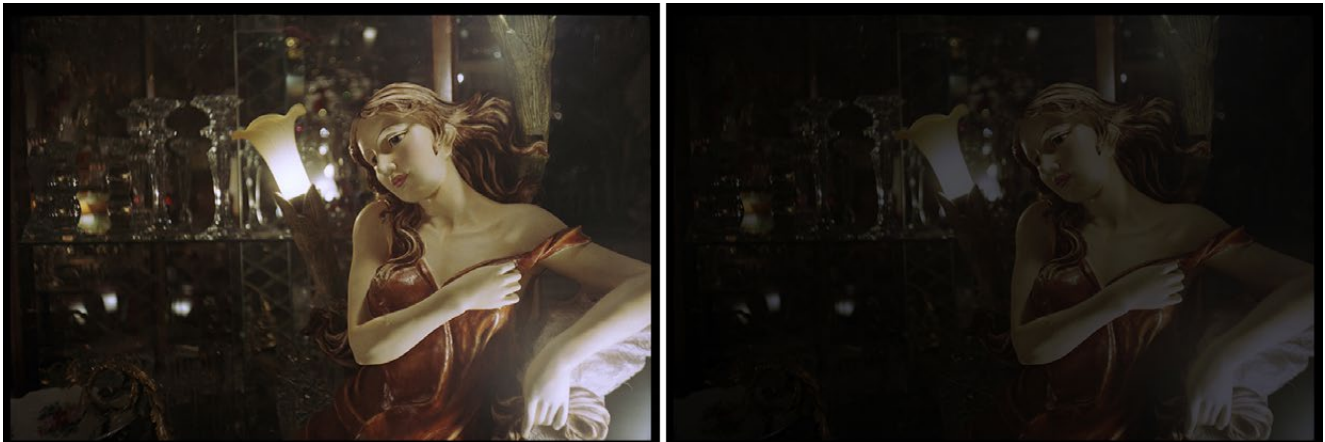
Crystal Shop from the "Night Is..." Series
Edition of 3
Diptych, Image dimensions: 6 x 9 cm
Each panel: 50x50x5 cm
Overall dimension: 50x100x5 cm
Analog photography
Inkjet print on Hahnemühle Photo Rag Ultra Smooth
Lambda Print On Kodak Professional Backlit Transparency Film



Toy Store #2 from the "Night Is..." Series
Edition of 3
Diptych, Image dimensions: 6 x 9 cm
Each panel: 50x50x5 cm
Overall dimension: 50x100x5 cm
Analog photography
Inkjet print on Hahnemühle Photo Rag Ultra Smooth
Lambda Print On Kodak Professional Backlit Transparency Film



Quilt Shop from the "Night Is..." Series
2003 - 2014
Edition of 3
Diptych, Image dimensions: 6 x 9 cm
Each panel: 50x50x5 cm
Overall dimension: 50x100x5 cm
Analog photography
Inkjet print on Hahnemühle Photo Rag Ultra Smooth
Lambda Print On Kodak Professional Backlit Transparency Film



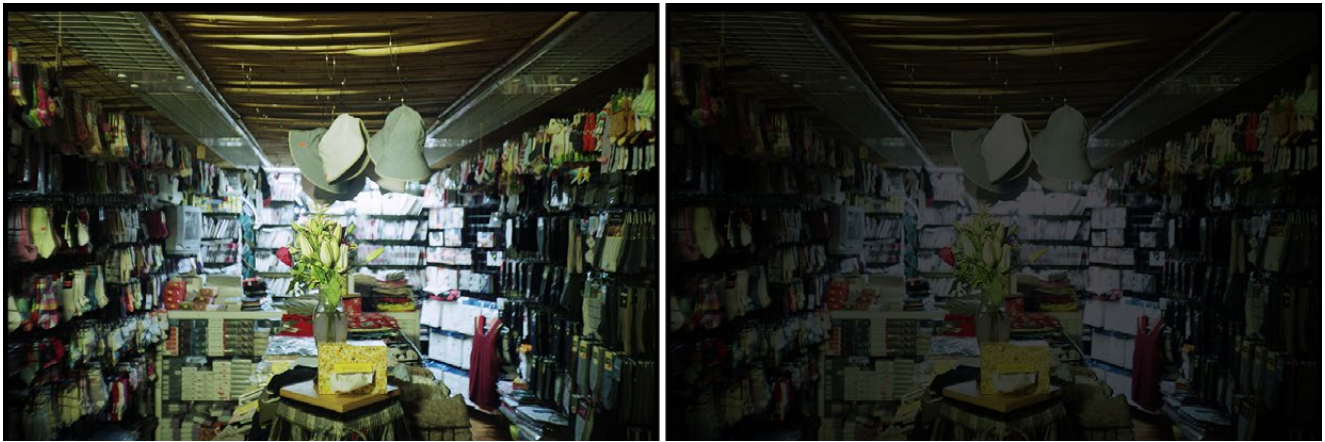
Antique Store from the "Night Is..." Series
2003 - 2014
Edition of 3
Diptych, Image dimensions: 6 x 9 cm
Each panel: 50x50x5 cm
Overall dimension: 50x100x5 cm
Analog photography
Inkjet print on Hahnemühle Photo Rag Ultra Smooth
Lambda Print On Kodak Professional Backlit Transparency Film



Home Store from the "Night Is..." Series
2003 - 2014
Edition of 3
Diptych, Image dimensions: 6x9 cm
Each panel: 50x50x5 cm
Overall dimension: 50x100x5 cm
Analog photography
Inkjet print on Hahnemühle Photo Rag Ultra Smooth
Lambda Print On Kodak Professional Backlit Transparency Film



Photography Studio #2 from the "Night Is..." Series
 2003 - 2014
 Edition of 3
 Diptych, Image dimensions: 6 x 9 cm
 Each panel: 50x50x5 cm
 Overall dimension: 50x100x5 cm
 Analog photography
 Inkjet print on Hahnemühle Photo Rag Ultra Smooth
 Lambda Print On Kodak Professional Backlit Transparency Film



Hoisery Store from the "Night Is..." Series

2003 - 2014

Edition of 3

Diptych, Image dimensions: 6 x 9 cm

Each panel: 50x50x5 cm

Overall dimension: 50x100x5 cm

Analog photography

Inkjet print on Hahnemühle Photo Rag Ultra Smooth

Lambda Print On Kodak Professional Backlit Transparency Film



Furniture Store #2 from the "Night Is..." Series

2003 - 2014

Edition of 3

Diptych, Image dimensions: 6 x 9 cm

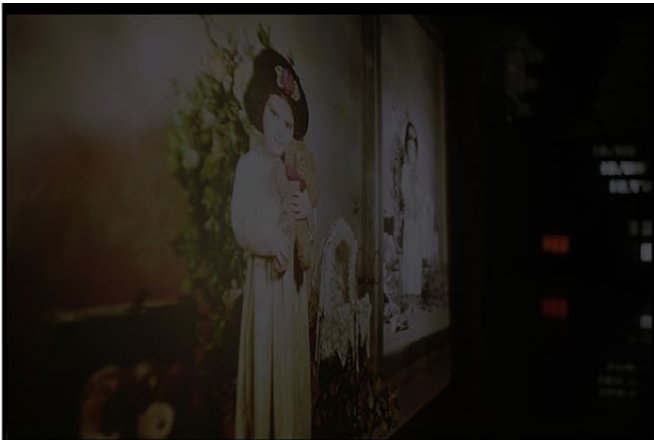
Each panel: 50x50x5 cm

Overall dimension: 50x100x5 cm

Analog photography

Inkjet print on Hahnemühle Photo Rag Ultra Smooth

Lambda Print On Kodak Professional Backlit Transparency Film



Photography Studio #1 from the "Night Is..." Series
2003 - 2014
Edition of 3
Diptych, Image dimensions: 6 x 9 cm
Each panel: 50x50x5 cm
Overall dimension: 50x100x5 cm
Analog photography
Inkjet print on Hahnemühle Photo Rag Ultra Smooth
Lambda Print On Kodak Professional Backlit Transparency Film



Toy Store #1 from the "Night Is..." Series

2003 - 2014

Edition of 3

Diptych, Image dimensions: 6 x 9 cm

Each panel: 50x50x5 cm

Overall dimension: 50x100x5 cm

Analog photography

Inkjet print on Hahnemühle Photo Rag Ultra Smooth

Lambda Print On Kodak Professional Backlit Transparency Film



Flower Shop #1 from the "Night Is..." Series
2003 - 2014
Edition of 3
Diptych, Image dimensions: 6 x 9 cm
Each panel: 50x50x5 cm
Overall dimension: 50x100x5 cm
Analog photography
Inkjet print on Hahnemühle Photo Rag Ultra Smooth
Lambda Print On Kodak Professional Backlit Transparency Film



Appliance Store from the "Night Is..." Series

2003 - 2014

Edition of 3

Diptych, Image dimensions: 6 x 9 cm

Each panel: 50x50x5 cm

Overall dimension: 50x100x5 cm

Analog photography

Inkjet print on Hahnemühle Photo Rag Ultra Smooth

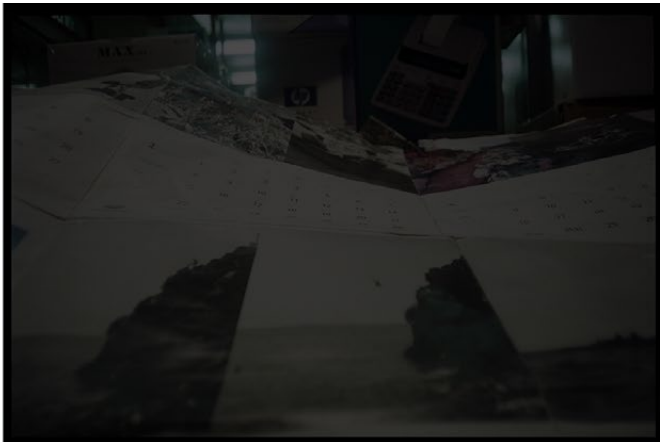
Lambda Print On Kodak Professional Backlit Transparency Film



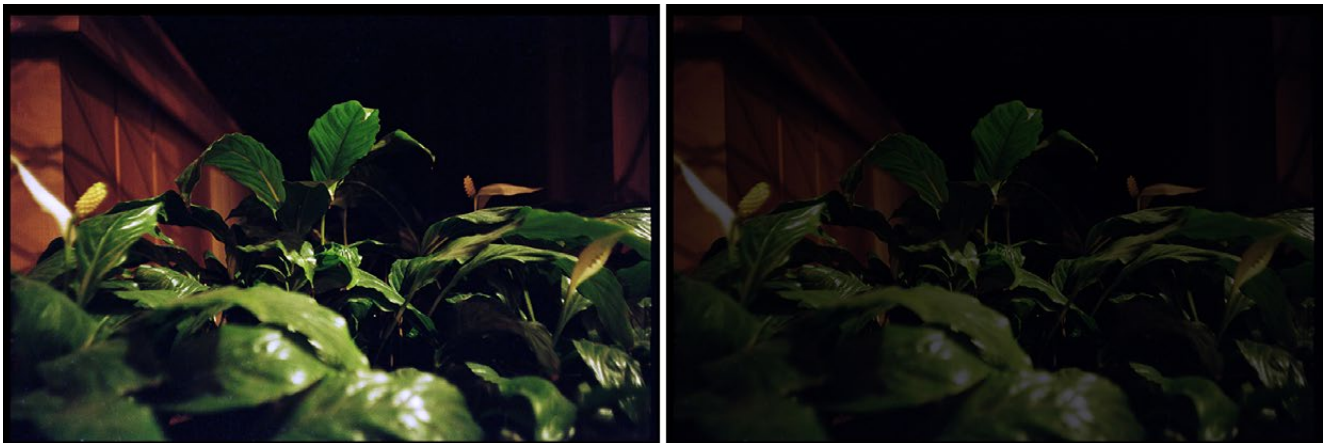
Furniture Store #3 from the "Night Is..." Series
2003 - 2014
Edition of 3
Diptych, Image dimensions: 6 x 9 cm
Each panel: 50x50x5 cm
Overall dimension: 50x100x5 cm
Analog photography
Inkjet print on Hahnemühle Photo Rag Ultra Smooth
Lambda Print On Kodak Professional Backlit Transparency Film



Iranian Artists' Forum from the "Night Is..." Series
2003 - 2014
Edition of 3
Diptych, Image dimensions: 6 x 9 cm
Each panel: 50x50x5 cm
Overall dimension: 50x100x5 cm
Analog photography
Inkjet print on Hahnemühle Photo Rag Ultra Smooth
Lambda Print On Kodak Professional Backlit Transparency Film



Electronic Shop from the "Night Is..." Series
 2003 - 2014
 Edition of 3
 Diptych, Image dimensions: 6 x 9 cm
 Each panel: 50x50x5 cm
 Overall dimension: 50x100x5 cm
 Analog photography
 Inkjet print on Hahnemühle Photo Rag Ultra Smooth
 Lambda Print On Kodak Professional Backlit Transparency Film



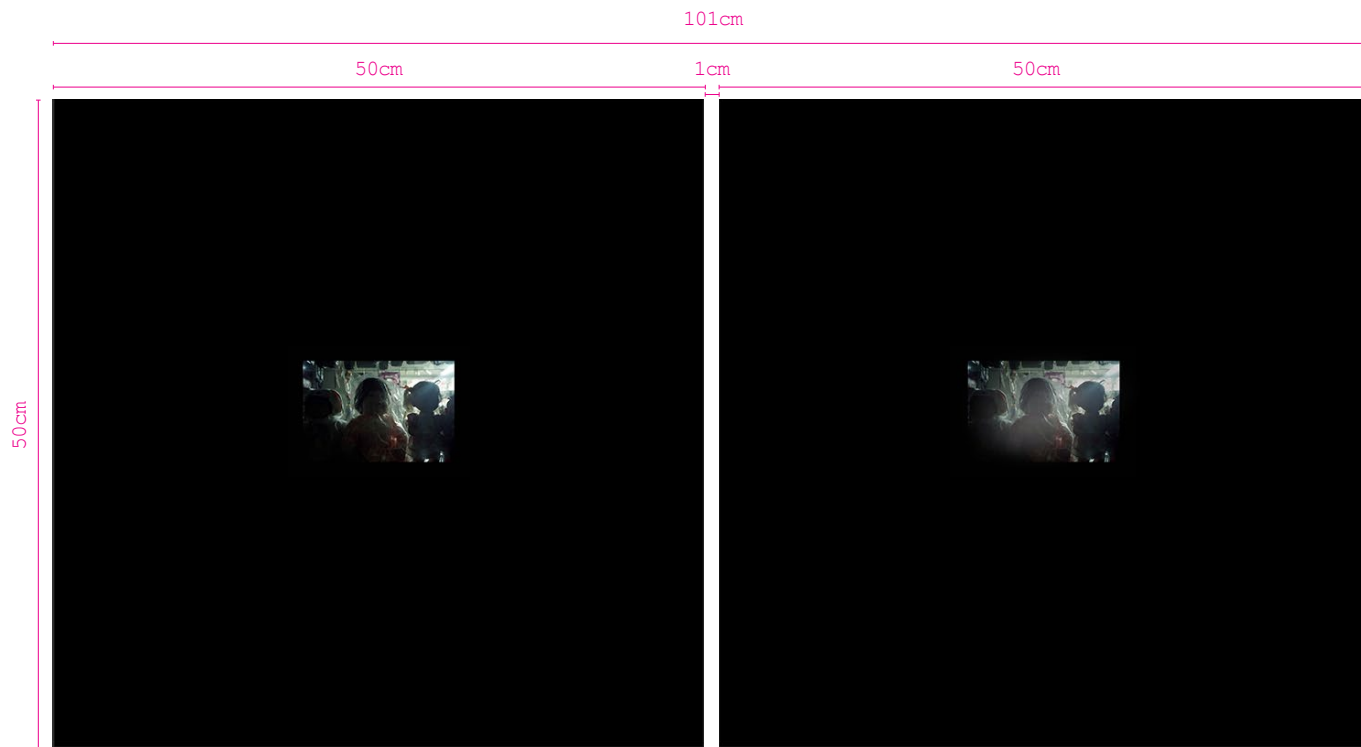
Photography Studio #3 from the "Night Is..." Series
2003 - 2014
Edition of 3
Diptych, Image dimensions: 6 x 9 cm
Each panel: 50x50x5 cm
Overall dimension: 50x100x5 cm
Analog photography
Inkjet print on Hahnemühle Photo Rag Ultra Smooth
Lambda Print On Kodak Professional Backlit Transparency Film



Bakery from the "Night Is..." Series
2003 - 2014
Edition of 3
Diptych, Image dimensions: 6 x 9 cm
Each panel: 50x50x5 cm
Overall dimension: 50x100x5 cm
Analog photography
Inkjet print on Hahnemühle Photo Rag Ultra Smooth
Lambda Print On Kodak Professional Backlit Transparency Film



Flower Shop #2 from the "Night Is..." Series
2003 - 2014
Edition of 3
Diptych, Image dimensions: 6 x 9 cm
Each panel: 50x50x5 cm
Overall dimension: 50x100x5 cm
Analog photography
Inkjet print on Hahnemühle Photo Rag Ultra Smooth
Lambda Print On Kodak Professional Backlit Transparency Film



Inkjet Print on Paper

Backlit Transparency Film
Light Box

Installation Instructions

Diptych, Image dimensions: 6x9 cm

Each panel: 50x50x5 cm

Overall dimension: 50x100x5 cm



Installation view

